

OFFICE PROFESSIONAL O-P DISTRICT

- A. Permitted Uses**
1. Health, Legal and Other Professional Services
 2. The Administrative offices such as:
 - Depository Institutions
 - Nondepository Credit Institutions
 - Security and Commodity Brokers, Dealers, Exchanges and Services
 - Insurance Carriers
 - Insurance Agents, Brokers and Service
 - Real Estate
 - Holding and Other Investment Offices
 - Business Services
 - Engineering, Accounting, Research, Management and Related Services
 - Services Not Elsewhere Classified
- B. Permitted Accessory Uses**
1. Private garage space for the storage of commercial vehicles
 - utilized in conjunction with a permitted business use.
 2. Maintenance and storage buildings.
 3. Off-street parking subject to the provisions of Section 8.26.
 4. Signs subject to the provisions of Section of 8.34.
 5. Fences and hedges subject to the provisions of Section 8.16.
- C. Conditional Uses**
1. Public Utilities
- D. Standards and Regulations:** As specified in the Schedule of Regulations.
- E. Buffer to Residential Area**
- Ten feet (10') plus five feet (5') for each additional ten feet (10') of building height or part thereof over fifteen feet (15')

OFFICE PROFESSIONAL BUSINESS O-PB DISTRICT

- A. Permitted Uses**
1. Equipment Stores
 - Household appliance stores
 - Radio, Television and Consumer Electronic Stores
 2. Miscellaneous Retail
 - Book Stores
 - Stationary Stores
 - Hobby, toy and game shops
 - Camera and photographic supply stores
 - Banking, Credit Agencies and Security and Commodity Brokers
 - Insurance and Real Estate
 - Holding and Other Investment Offices
 - Personal Services
 - Health, Legal, and Other Professional Services
- The Administrative offices such as:**
- Depository Institutions
 - Nondepository Credit Institutions
 - Security and Commodity Brokers, Dealers, Exchanges and Services
 - Insurance Carriers
 - Insurance Agents, Brokers and Service
 - Real Estate
 - Holding and Other Investment Offices
 - Business Services
 - Engineering, Accounting, Research, Management and Related Services
 - Services Not Elsewhere Classified
- B. Permitted Accessory Uses**
1. Private garage space for the storage of commercial vehicles
 - utilized in conjunction with a permitted business use.
 2. Maintenance and storage buildings.
 3. Off-street parking subject to the provisions of Section 8.26.
 4. Signs subject to the provisions of Section of 8.34.
 5. Fences and hedges subject to the provisions of Section 8.16.
- C. Conditional Uses**
1. Public Utilities
- D. Standards and Regulations:** As specified in the Schedule of Regulations.
- E. Buffer to Residential Area**
- Ten feet (10') plus five feet (5') for each additional ten feet (10') of building height or part thereof over fifteen feet (15')



NORTHFIELD AVENUE - BETWEEN TILTON & NEW ROAD



MILL ROAD - BETWEEN SHORE ROAD & BAY DRIVE

MATTHEW F. DORAN
 N.J. P.E. No. 12509
 N.J. P.P. L.C. No. 2242
 P.A. P.E. L.C. No. 27281-F

PATRICK J. DORAN
 N.J. P.E. L.C. No. 12509
 N.J. P.P. L.C. No. 1987
 P.A. P.E. L.C. No. 27283-F

DORAN
 ENGINEERING, P.A.
 ENGINEERS - SURVEYORS - PLANNERS
 1000 W. NORTHFIELD AVE., SUITE 200
 PLASANTVILLE, N.J. 08859
 Telephone: (908) 646-3111 Fax: (908) 641-0982

AERIAL PHOTOGRAPHS
 NORTHFIELD AVENUE - NEW TO TILTON ROAD
 SHORE ROAD - OAKCREST & ERIE AVENUES
 CITY OF NORTHFIELD
 ATLANTIC COUNTY, NEW JERSEY

REVISIONS	
DATE	DESCRIPTION

DWN: MD JR. CJO: MFD
 SCALE: AS NOTED
 DATE: 08/21/2012
 PROJECT:
 SHEET: 1 OF 2

RESIDENTIAL BUSINESS R-2 DISTRICT

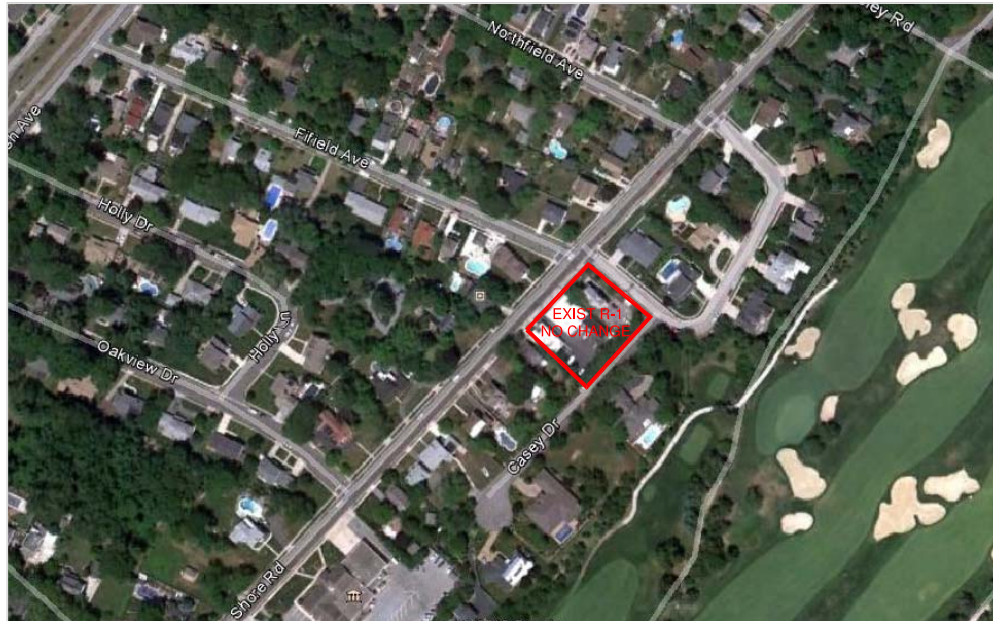
- A. Permitted Uses**
 1. Single family detached houses and other uses permitted in accordance with the R-1 Zone District.
 2. Public community center building, auditorium, public library, public amusement, public art gallery, or other place of public assembly not conducted for gain of profit.
 3. The Bulk Requirements for the R-2 Zone shall be utilized for the permitted Residential Uses.

B. Permitted Conditional Uses
 All the following uses are to be considered Conditional Use. All Conditional Uses must receive Planning/Zoning Board approval

1. Miscellaneous Retail
 - Drug and proprietary stores
 - Miscellaneous shopping goods stores
 - Florists
 - News dealers and news stands
2. Banking and Credit
3. Personal Services
 - Garment pressing and agents for laundries and dry cleaning, including pick up shops
 - Photographic, art, dance and similar studios
 - Beauty shops
 - Barber shops
 - Shoe repair, shoe shine parlors and hat cleaning shops
 - Childcare Senior Care Services
 - Pet services
4. Health, Legal and Other Professional Service (Amended by Ordinance 1-1997)
 - Offices of physicians, dentists osteopathic physicians other health Practitioners and Allied Medical Services
 - Legal Services
 - Engineering, architectural and survey services
 - Accounting, audit and bookkeeping services
5. Public Facilities and Uses as follows:
 - Community centers
 - Auditorium
 - Library
 - Museum
 - Art Gallery
6. Administrative Offices (Amended by Ordinance 1-1997)
 - Depository Institutions
 - Nondepository and Credit Institutions
 - Security and Commodity Brokers, Dealers, Exchanges and Services
 - Insurance Carriers
 - Insurance Agents, Brokers and Services
 - Real Estate
 - Holding and Other Investment Offices
 - Business Services
 - Engineering, Accounting, Management, and Related Services
7. Conditional Use Standards
 - Parking must comply with the ordinance standards for the use proposed.
 - All Conditional Uses shall be limited to hours of operation from 6:30 a.m. to 11:30 p.m.



SHORE ROAD- OAKCREST & ERIE AVENUES



SHORE ROAD- GOLFVIEW & CASEY DRIVES

MATTHEW F. DORAN
 N.J. P.E. & P.L.S. Lic. No. 28273
 P.A. P.E. Lic. No. 51291-E

PATRICK J. DORAN
 N.J. Lic. No. 12909
 P.A. P.E. Lic. No. 27233-E

DORAN
 ENGINEERING, P.A.
 ENGINEERS - SURVEYORS - PLANNERS
 440 NORTH MAIN STREET
 PLASMOTVILLE, N.J. 08232
 Telephone: (609) 946-3111 Fax: (609) 641-0282

AERIAL PHOTOGRAPHS
 SHORE ROAD - OAKCREST & ERIE AVENUES
 SHORE ROAD - GOLFVIEW & CASEY DRIVES
 CITY OF NORTHFIELD,
 ATLANTIC COUNTY, NEW JERSEY

REVISIONS		
DATE	BY	DESCRIPTION

DWR: MD JR. CND: MFD
 SCALE: AS NOTED
 DATE: 06/21/2012
 PROJECT:
 SHEET: 2 OF 2